



Pipes & Fittings

Electrical Piping Systems



Har Building ki
LIFELINE
Precision Pipeline

Precision Round Conduit PVC Pipes & Fittings are manufactured from a specially formulated unplasticised polyvinyl chloride (UPVC) to meet the most stringent Indian and International standards. Our products are made of Extra Super High Impact materials which make them safe to use in harsh environments. The products are manufactured in accordance with IS: 9537 Part 3, BS: EN 61386 – 21 for UPVC conduits, IS: 3419 and BS: 4607 for UPVC fittings.

Applications

Channelising concealed & Surface wiring. Telecommunication & Cable ducting.

Features

- Various diameters & grades
- Light, medium & heavy mechanical stress, to suit various applications & site conditions
- Easy & fast installation
- Wide range of component maximises application
- Durable & impact resistant
- Fire retardant
- Corrosion free
- Thermal resistant from -5°C to +60°C.

Precision circular boxes & adaptable boxes are provided with M4 brass insert with a load suspension capacity of 3 Kgs at 60°C.

Colour

Black, Grey, Ivory & White. Other colours are available on a made-to-order basis.

Dimensions of Round Conduit PVC Pipes IS : 9537 Part 3

Nominal Size mm	Outside Diameter mm	Tolerance on Outside Diameter mm	Inside Diameter (Min) mm		
			Light	Medium	Heavy
16	16	-0.3	13.7	13.0	12.2
19 [#]	19	-0.3	16.5	16.0	15.1
20	20	-0.3	17.4	16.9	15.8
25	25	-0.4	22.1	21.4	20.6
32	32	-0.4	28.6	27.8	26.6
40	40	-0.4	35.8	35.4	34.4
50	50	-0.5	45.1	44.3	43.2
63	63	-0.6	57.0	-	-



ROUND CONDUIT PVC PIPES

COLOUR : BLACK / GREY / IVORY / WHITE LENGTH : 3 mtr

°FRLS IS:9537 PART 3

CE U.V.S.

Sr. No.	PRODUCT CODE	SIZE OD (mm)	STD. PACK		RATE (mtr)
			Pcs/Mtrs	Mtrs/Bundle	
LMS (LIGHT MECHANICAL STRESS)					
1	PRC 16L	16	100 x 3m	300	18.00
2	PRC 19L [#]	19	100 x 3m	300	20.00
3	PRC 20L	20	100 x 3m	300	22.00
4	PRC 25L	25	100 x 3m	300	30.50
5	PRC 32L	32	50 x 3m	150	46.50
6	PRC 40L	40	25 x 3m	75	76.00
7	PRC 50L	50	20 x 3m	60	109.00
8	PRC 63L	63	18 x 3m	54	146.00
MMS (MEDIUM MECHANICAL STRESS)					
9	PRC 16M	16	100 x 3m	300	22.00
10	PRC 19M [#]	19	100 x 3m	300	23.00
11	PRC 20M	20	100 x 3m	300	25.00
12	PRC 25M	25	100 x 3m	300	35.00
13	PRC 32M	32	50 x 3m	150	58.00
14	PRC 40M	40	25 x 3m	75	83.00
15	PRC 50M	50	20 x 3m	60	128.00
HMS (HEAVY MECHANICAL STRESS)					
16	PRC 16H	16	100 x 3m	300	26.50
17	PRC 19H [#]	19	100 x 3m	300	30.00
18	PRC 20H	20	100 x 3m	300	34.50
19	PRC 25H	25	50 x 3m	150	42.50
20	PRC 32H	32	50 x 3m	150	76.00
21	PRC 40H	40	25 x 3m	75	101.00
22	PRC 50H	50	20 x 3m	60	152.00



Sr. No.	PRODUCT CODE	SIZE OD (mm)	STD. PACK		RATE (mtr)
			Pcs/Mtrs	Mtrs/Bundle	
MMS (L.H.S.F.T. CONDUIT)					
23	PSFT 20M	20	100 x 3m	300	31.50
24	PSFT 25M	25	100 x 3m	300	43.00
25	PSFT 32M	32	50 x 3m	150	76.00
26	PSFT 40M	40	25 x 3m	75	114.00
27	PSFT 50M	50	20 x 3m	60	156.00
HMS (L.H.S.F.T. CONDUIT)					
28	PSFT 20H	20	100 x 3m	300	42.00
29	PSFT 25H	25	50 x 3m	150	55.00
30	PSFT 32H	32	50 x 3m	150	96.00
31	PSFT 40H	40	25 x 3m	75	131.00
32	PSFT 50H	50	20 x 3m	60	189.00
BENDING SPRING					
33	PBS20M	20	5	50	270.00
34	PBS20H	20	5	50	270.00
35	PBS25M	25	5	25	320.00
36	PBS25H	25	5	25	320.00



* CONDUITS ALSO AVAILABLE WITH SOCKET
SPECIAL SIZES

° FRLS : FIRE RETARDANT • LOW SMOKE

* LHSFT : LOW - HALOGEN • SMOKE SUPPRESSING • FIRE RETARDANT • TEMPERATURE STABLE • LEAD FREE

ROUND CONDUIT PVC PIPE FITTINGS

COLOUR : BLACK / GREY / IVORY / WHITE

IS:3419
1988

Sr. No.	PRODUCT CODE	SIZE OD (mm)	STD. PACK		RATE (pc)
			Box	Carton	
CIRCULAR BOX - TERMINAL (1 WAY)					
37	PRCB 191	19	20	600	14.50
38	PRCB 201	20	20	600	15.00
39	PRCB 251	25	15	450	21.00
40	PRCB 401	40	10	160	45.00
CIRCULAR BOX - ANGLE (2 WAY)					
41	PRCB 192A	19	20	400	16.50
42	PRCB 202A	20	20	400	17.00
43	PRCB 252A	25	15	300	22.00
44	PRCB 402A	40	10	160	49.00
CIRCULAR BOX - THROUGH (2 WAY)					
45	PRCB 192S	19	20	400	16.50
46	PRCB 202S	20	20	400	17.00
47	PRCB 252S	25	15	300	22.00
48	PRCB 402S	40	10	160	49.00



Sr. No.	PRODUCT CODE	SIZE OD (mm)	STD. PACK		RATE (pc)
			Box	Carton	
CIRCULAR BOX - TEE (3 WAY)					
49	PRCB 193	19	20	400	18.50
50	PRCB 203	20	20	400	19.00
51	PRCB 253	25	15	300	24.00
52	PRCB 403	40	10	160	52.00
CIRCULAR BOX - INTERSECTION (4 WAY)					
53	PRCB 194	19	20	400	19.50
54	PRCB 204	20	20	400	20.00
55	PRCB 254	25	15	240	28.00
56	PRCB 404	40	10	160	59.00
DEEP CIRCULAR BOX - TERMINAL (1 WAY)					
57	PRCB 201D	20	10	280	27.50
58	PRCB 251D	25	10	280	33.00
59	PRCB 321D	32	10	280	38.00



ROUND CONDUIT PVC PIPE FITTINGS

COLOUR : BLACK / GREY / IVORY / WHITE

Sr. No.	PRODUCT CODE	SIZE OD (mm)	STD. PACK Box	Carton	RATE (pc)
DEEP CIRCULAR BOX - ANGLE (2 WAY)					
60	PRCB 202AD	20	10	280	29.00
61	PRCB 252AD	25	10	280	34.00
62	PRCB 322AD	32	10	280	41.00
DEEP CIRCULAR BOX - THROUGH (2 WAY)					
63	PRCB 202SD	20	10	200	29.00
64	PRCB 252SD	25	10	200	34.00
65	PRCB 322SD	32	10	200	41.00
DEEP CIRCULAR BOX - TEE (3 WAY)					
66	PRCB 203D	20	10	220	31.00
67	PRCB 253D	25	10	220	40.00
68	PRCB 323D	32	10	160	44.00
DEEP CIRCULAR BOX- INTERSECTION (4WAY)					
69	PRCB 204D	20	10	220	33.00
70	PRCB 254D	25	10	220	42.00
71	PRCB 324D	32	10	160	50.00
CIRCULAR BOX BRANCH - 2WAY (U)					
72	PRCB 20U	20	20	400	29.00
73	PRCB 25U	25	20	400	38.00
CIRCULAR BOX BRANCH - 3WAY (Y)					
74	PRCB 20Y	20	20	400	31.00
75	PRCB 25Y	25	15	300	41.00
CIRCULAR BOX BRANCH - 4WAY (H)					
76	PRCB 20H	20	15	300	33.00
77	PRCB 25H	25	15	300	44.00
CIRCULAR BOX BACK OUTLET (1WAY)					
78	PRCB 201 BO	20	20	400	28.00
79	PRCB 251 BO	25	15	300	39.00
CIRCULAR BOX BACK OUTLET THROUGH (2 WAY)					
80	PRCB 202S BO	20	20	400	29.00
81	PRCB 252S BO	25	15	300	41.00
CIRCULAR BOX BACK OUTLET ANGLE (2WAY)					
82	PRCB 202A BO	20	20	400	29.00
83	PRCB 252A BO	25	15	300	41.00
CIRCULAR BOX BACK OUTLET TEE (3WAY)					
84	PRCB 203 BO	20	20	400	31.00
85	PRCB 253 BO	25	15	300	44.00
CIRCULAR LID					
86	PRCL	65 [*]	100	2000	4.50
87	PRCL 40	80 [#]	100	2000	10.50
88	PRCL 1	85	100	2000	11.00
89	PRCL S	90	100	1800	12.00
90	PRCL SL	110	50	900	20.00
CIRCULAR EXTENSION RING					
91	PRER 20	20	50	800	11.00
92	PRER 25	25	40	640	13.00



Sr. No.	PRODUCT CODE	SIZE OD (mm)	STD. PACK Box	Carton	RATE (pc)
LOOP IN BOX					
93	PRLB 20	20	20	400	17.00
LOOP IN BOX EXTENSION					
94	PRLB 20E	20	24	384	24.00
FAN BOX					
95	PRFB20	20Standard	10	220	45.00
96	PRFB25	25Standard	10	220	45.00
97	PRFB20SL	20Large	10	140	61.00
98	PRFB25SL	25Large	10	140	61.00
99	PRFBRD	20/25(With Rod)	1	28	182.00
100	PRFBRD	25(With Rod)	1	28	182.00
G. I . FAN BOX					
101		20/25			
COUPLER					
102	PCR 19L	19 Long	100	2000	4.50
103	PCR 20	20	100	2000	4.50
104	PCR 20L	20 Long	150	2400	5.00
105	PCR 25	25	100	2000	6.50
106	PCR 32	32	60	960	12.00
107	PCR 40	40	30	480	20.00
108	PCR 50	50	20	320	33.00
REDUCER COUPLER (PIPE TO FITTING)					
109	PRR 1	25>20	250	4000	6.50
REDUCER COUPLER (PIPE TO PIPE)					
110	PRR 2520	25>20	75	1500	7.00
111	PRR 3220	32>20	60	1200	10.00
112	PRR 3225	32>25	40	800	12.00
113	PRR 4020	40>20	48	960	13.00
114	PRR 4032	40>32	32	640	16.00
115	PRR 5032	50>32	30	480	20.00
116	PRR 5040	50>40	30	480	21.00
SLIP TYPE BEND					
117	PRBN 19	19	65	1040	8.50
118	PRBN 20	20	65	1040	9.00
119	PRBN 25	25	35	560	14.50
120	PRBN 32	32	20	320	40.00
121	PRBN 40	40	10	160	80.00
122	PRBN 50	50	5	80	113.00
123	PRBN 63	63	1	50	118.00
SLIP TYPE LONG BEND					
124	PRBL 19	19	45	720	12.50
125	PRBL 20	20	45	720	13.00
126	PRBL 25	25	20	320	23.00
127	PRBL 32	32	10	160	55.00
128	PRBL 40	40	1	80	109.00
129	PRBL 50	50	1	55	156.00



3 *For 20/25/32mm JB & DJB # For 40mm JB

Sr. No.	PRODUCT CODE	SIZE OD (mm)	STD. PACK		RATE (pc)
			Box	Carton	
SPACE BAR SADDLE					
130	PRBS 19	19	100	2000	7.50
131	PRBS 20	20	100	2000	7.50
132	PRBS 25	25	100	2000	9.50
133	PRBS 32	32	100	1600	13.00
134	PRBS 40	40	80	1280	17.00
135	PRBS 50	50	60	960	20.00
136	PRBS 63	63	1	50	26.00
ROUND 'U' CLIP					
137	PRUC 20	20	200	4000	6.50
END CAP					
138	PREC 20	20	150	3000	3.00
139	PREC 25	25	100	2000	4.00
140	PREC 32	32	70	1400	5.00
141	PREC 40	40	32	640	10.00
142	PREC 50	50	24	480	13.00
MALE BUSH ADAPTOR					
143	PMBA 20	20	100	2000	8.00
144	PMBA 25	25	100	2000	9.00
FEMALE BUSH ADAPTOR					
145	PFBA 19	19	100	2000	8.00
146	PFBA 20	20	100	2000	8.00
147	PFBA 25	25	100	2000	10.00
148	PFBA 32	32	75	1200	22.00
149	PFBA 40	40	50	800	30.00
150	PFBA 50	50	25	400	50.00
ROUND ELBOW					
151	PRE 20	20	125	2500	7.00
152	PRE 25	25	75	1200	10.00
153	PRE 32	32	20	400	13.00
154	PRE 40	40	15	300	18.00
155	PRE 50	50	10	200	32.00
ROUND TEE					
156	PRT 20	20	50	1500	11.00
157	PRT 25	25	50	800	14.00
158	PRT 32	32	15	300	17.00
159	PRT 40	40	10	200	25.00
160	PRT 50	50	10	160	40.00
INSPECTION ELBOW					
161	PIE 20	20	20	600	28.00
162	PIE 25	25	20	400	35.00
INSPECTION TEE					
163	PIT20	20	20	600	29.00
164	PIT 25	25	20	400	41.00
INSPECTION BEND					
165	PIB 20	20	20	600	29.00
166	PIB 25	25	20	400	41.00



Sr. No.	PRODUCT CODE	SIZE OD (mm)	STD. PACK		RATE (pc)
			Box	Carton	
ADAPTABLE BOX WITH LID					
167	PAB 75L	3"x3"x2" 75x75x50	10	200	61.00
168	PAB 110L	4"x4"x3" 110x110x75	1	100	121.00
169	PAB 160L	6"x4"x3" 160x110x75	1	75	240.00
170	PAB 160SL	6"x6"x3" 160x160x75	1	50	265.00
171	PAB 225SL	9"x9"x3" 225x225x75	1	20	570.00
172	PAB 300SL	12"x12"x4" 300x300x110	1	5	1200.00
SURFACE SWITCH BOX					
173	PSB1	3"x3"	10	300	38.00
174	PSB2	6"x3"	10	200	66.00
SWITCH BOX LID					
175	PSBL1 LID	3"x3"	50	1500	17.00
176	PSBL2 LID	6"x3"	25	750	22.00
FLUSH MOUNTED - SWITCH BOX					
177	PFSB1	3"x3"x2.5"	10	200	43.00
178	PFSB2	6"x3"x2.5"	10	160	58.00
PVC SOLVENT CEMENT					
Sr. No.	PRODUCT CODE	SIZE (ml)	STD. PACK		RATE (Tin)
			Box	Carton	
179	PSC 250ML	250ml	24	96	126.00
180	PSC 500ML	500ml	12	48	215.00
181	PSC1L	1L	6	24	380.00
182	PSC5L	5L	1	6	1540.00



OVAL CONDUIT PVC PIPES

COLOUR : WHITE LENGTH : 2 MTR

Sr. No.	PRODUCT CODE	SIZE (mm)	STD. PACK		RATE (mtr)
			Pcs /Mtrs	Mtr/Bundle	
OVAL CONDUIT					
183	POC 16	16	200x2m	400	13.00
184	POC 20	20	200x2m	400	17.00
185	POC 25	25	100x2m	200	23.00



OVAL CONDUIT PVC PIPE FITTINGS

COLOUR : WHITE

Sr. No.	PRODUCT CODE	SIZE (mm)	STD. PACK PCS / BOX	RATE (pc)
OVAL CONNECTOR				
186	POCT 16	16	100	2.00
187	POCT 20	20	50	3.00
188	POCT 25	25	50	4.00



OVAL CONDUIT PVC PIPE FITTINGS

COLOUR : WHITE

Sr. No.	PRODUCT CODE	SIZE (mm)	STD. PACK PCS / BOX	RATE (pc)
OVAL ELBOW				
189	POE 16	16	100	3.00
190	POE 20	20	75	4.00
191	POE 25	25	50	6.00
OVAL TEE				
192	POT 16	16	100	4.00
193	POT 20	20	50	5.00
194	POT 25	25	40	6.00
OVAL INTERNAL BEND				
195	POIB 16	16	100	4.00
196	POIB 20	20	50	4.00
197	POIB 25	25	25	5.00
OVAL EXTERNAL BEND				
198	POEB 16	16	100	4.00
199	POEB 20	20	50	5.00
200	POEB 25	25	25	5.00



Sr. No.	PRODUCT CODE	SIZE (mm)	STD. PACK PCS / BOX	RATE (pc)
OVAL SADDLE STRAP				
201	POSS 16	16	100	3.00
202	POSS 20	20	100	3.00
203	POSS 25	25	100	5.00
OVAL SADDLE STRAP BASE				
204	POB	Standard	100	5.00
OVAL 'U' CLIP				
205	POU 16	16	200	3.00
206	POU 20	20	150	4.00
207	POU 25	25	150	4.50
OVAL TO ROUND ADAPTOR				
208	PORA 16	16	100	3.00
209	PORA 20	20	50	5.00
210	PORA 25	25	25	6.00



Precision Corrugated Flexible Conduit Pipes come in a wide and comprehensive range of material variants to suit variety of applications. These conduits are manufactured in slit and non-slit variants based on the final application for wiring purposes.

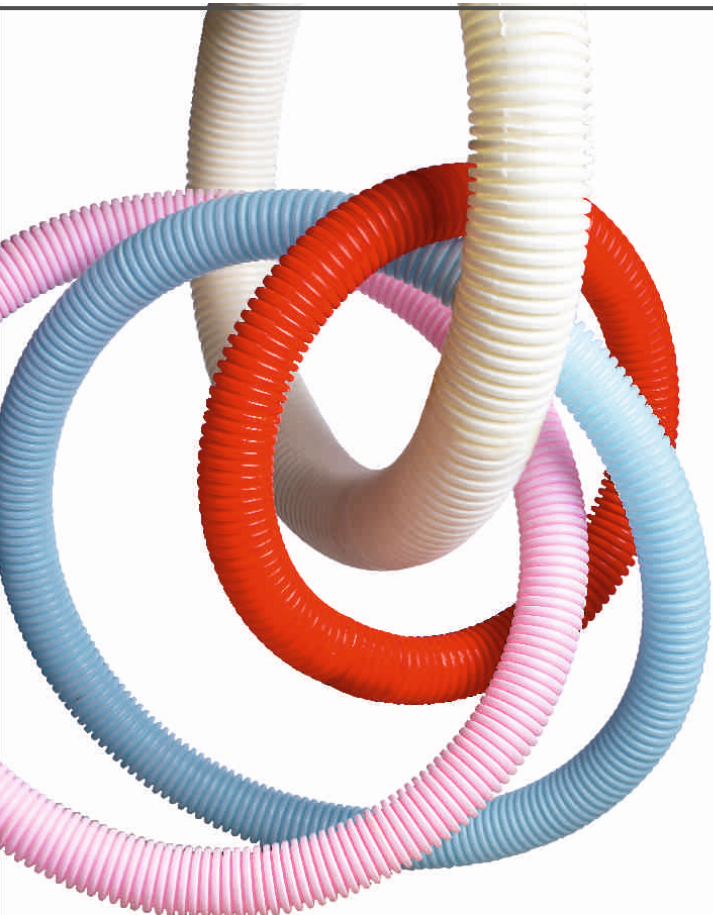
Polypropylene Flexible Conduits are the best solution for applications where resistance to constant flexing & vibration is essential. These conduits display excellent flexibility, moreover, they are light weight and easy to install which makes them very popular. Temperature resistant from -5°C to +90°C.

Fire Retardant Polypropylene Flexible Conduits are self extinguishing. These conduits are manufactured from UL94 V2 rated material, ideally suited for automobile applications, wire harnessing, electrical wiring, cable protection & envelope to LPG gas conductors. Temperature resistant from -5°C to +90°C.

Polyamide Flexible Conduits are manufactured from flame retardant & self extinguishing (Pa6) material making them suitable for high temperature zones where human life or components are at risk, high resistance to corrosion by most mineral oils, acids & alkalis. They are widely used in automobile applications and have temperature resistance up to +120°C. Also available in slit type.

Steel Wire Reinforced Flexible PVC Conduits are manufactured with Soft Polyvinyl Chloride (PVC) wall fused to High tensile steel Wire in a coiled state. These conduits are Unaffected by inorganic acid, alkali, saline water. Most suitable for Electrical wiring in Building, Switch Boards, Panels, Machinery, Vacuum Cleaners, Dust Collectors, Air Dusting, Exhaust of Fumes, Shrouds of Railway Coach Wiring, Hospital Equipments. Temperature resistant from -5° C to +60°C.

Colour : Black, White & Grey. Other colours available on a made-to-order basis.



DIMENSIONS OF CORRUGATED FLEXIBLE CONDUITS

Nominal Diameter (mm)	Maximum Outside Diameter (mm)	Tolerance on Outside Diameter (mm)	Minimum Inside Diameter (mm)
10	10	-0.1	7.0
16	16	-0.3	10.7
20	20	-0.3	14.1
25	25	-0.4	18.3
32	32	-0.4	24.3
40	40	-0.4	31.2
50	50	-0.5	39.6

CORRUGATED FLEXIBLE CONDUIT PIPES

COLOUR : BLACK, WHITE & GREY

Sr. No.	PRODUCT CODE	SIZE OD (mm)	STD. PACK		RATE (mtr)
			Mtr/Coil	Mtr/Bag	
PP (POLY PROPYLENE)					
211	PCFC 10	10	100	1000	8.50
212	PCFC 16	16	50	500	8.50
213	PCFC 20	20	50	500	10.50
214	PCFC 25	25	25	250	17.00
215	PCFC 32	32	25	250	27.00
216	PCFC 40	40	20	100	37.00
217	PCFC 50	50	15	75	58.00
218	PCFC 63	63	10	50	90.00
FRPP (FIRE RETARDANT POLY PROPYLENE)					
219	PCFR 10	10	100	1000	15.00
220	PCFR 16	16	50	500	15.00
221	PCFR 20	20	50	500	17.00
222	PCFR 25	25	25	250	25.00
223	PCFR 32	32	25	250	40.00
224	PCFR 40	40	20	100	60.00
225	PCFR 50	50	15	75	85.00
226	PCFR 63	63	10	50	140.00
NYLON (POLYAMIDE)					
227	PCPA 10	10	100	1000	90.00
228	PCPA 16	16	50	250	97.00
229	PCPA 20	20	50	250	115.00
230	PCPA 25	25	25	125	168.00
231	PCPA 32	32	25	125	256.00
232	PCPA 40	40	20	100	348.00
233	PCPA 50	50	15	75	483.00
234	PCPA 63	63	10	50	756.00



CORRUGATED FLEXIBLE CONDUIT PIPES (SLITTED)

(POLY PROPYLENE)					
235	PCFC 10 S	10	100	1000	11.00
236	PCFC 16 S	16	50	500	11.00
237	PCFC 20 S	20	50	500	12.50
238	PCFC 25 S	25	25	250	19.00
239	PCFC 32 S	32	25	250	30.00
240	PCFC 40 S	40	20	100	39.00
241	PCFC 50 S	50	15	75	60.00
242	PCFC 63 S	63	10	50	92.00
(FIRE RETARDANT POLY PROPYLENE)					
243	PCFR 10 S	10	100	1000	17.00
244	PCFR 16 S	16	50	500	17.00
245	PCFR 20 S	20	50	500	19.00
246	PCFR 25 S	25	25	250	27.00
247	PCFR 32 S	32	25	250	41.00
248	PCFR 40 S	40	20	100	61.00
249	PCFR 50 S	50	15	75	87.00
250	PCFR 63 S	63	10	50	142.00

STEEL WIRE REINFORCED FLEXIBLE PVC CONDUIT PIPES

COLOUR : GREY

Sr. No.	PRODUCT CODE	SIZE ID (mm)	STD. PACK		RATE (mtr)
			Mtr/Coil	Mtr/Bag	
251	PCWR 10	10	30	300	46.00
252	PCWR 15	15	30	300	51.00
253	PCWR 20	20	30	240	65.00
254	PCWR 25	25	30	210	72.00
255	PCWR 30	30	30	150	98.00
256	PCWR 40	40	30	120	128.00
257	PCWR 50	50	30	90	157.00
258	PCWR 60	60	15	75	204.00



CORRUGATED FLEXIBLE PVC CONDUIT PIPE FITTINGS

COLOUR : BLACK & GREY

Sr. No.	PRODUCT CODE	SIZE OD (mm)	STD. PACK		RATE (mtr)
			Box	Carton	
FLEXIBLE ADAPTOR (2 PART)					
259	PFA 20	20	200	3200	9.00
260	PFA 25	25	150	2400	14.00
KOPEX ADAPTOR (4 PART)					
261	PKA 20	20	100	2000	17.00
262	PKA 25	25	50	1500	18.00
CORRUGATED ADAPTOR					
263		10			Ⓢ
264		16			Ⓢ
265		20			Ⓢ
266		25			Ⓢ
267		32			Ⓢ
268		40			Ⓢ
269		50			Ⓢ



Precision Mini / Maxi Trunking & Fittings are manufactured from High Impact unplasticised polyvinyl chloride (UPVC) grade material capable of withstanding the most hazardous conditions on-site & exceeds the most stringent requirements of Indian and International standards. The product range brings a whole new world of sophistication and convenience to home, office & commercial establishments and is in accordance with Indian Standards IS:14927 Part 2 and BS: EN 50085-2-1. Mini Trunking are also available with self fixing tape for instant and easy installation. Clip on lid provides security while allowing easy maintenance.

Precision Maxi Trunking Cable Management System is designed for convenience and safety with compartments for separate wiring applications. Maxi Trunking fittings are available in moulded and fabricated form, thus adding a sleek touch to your interiors.

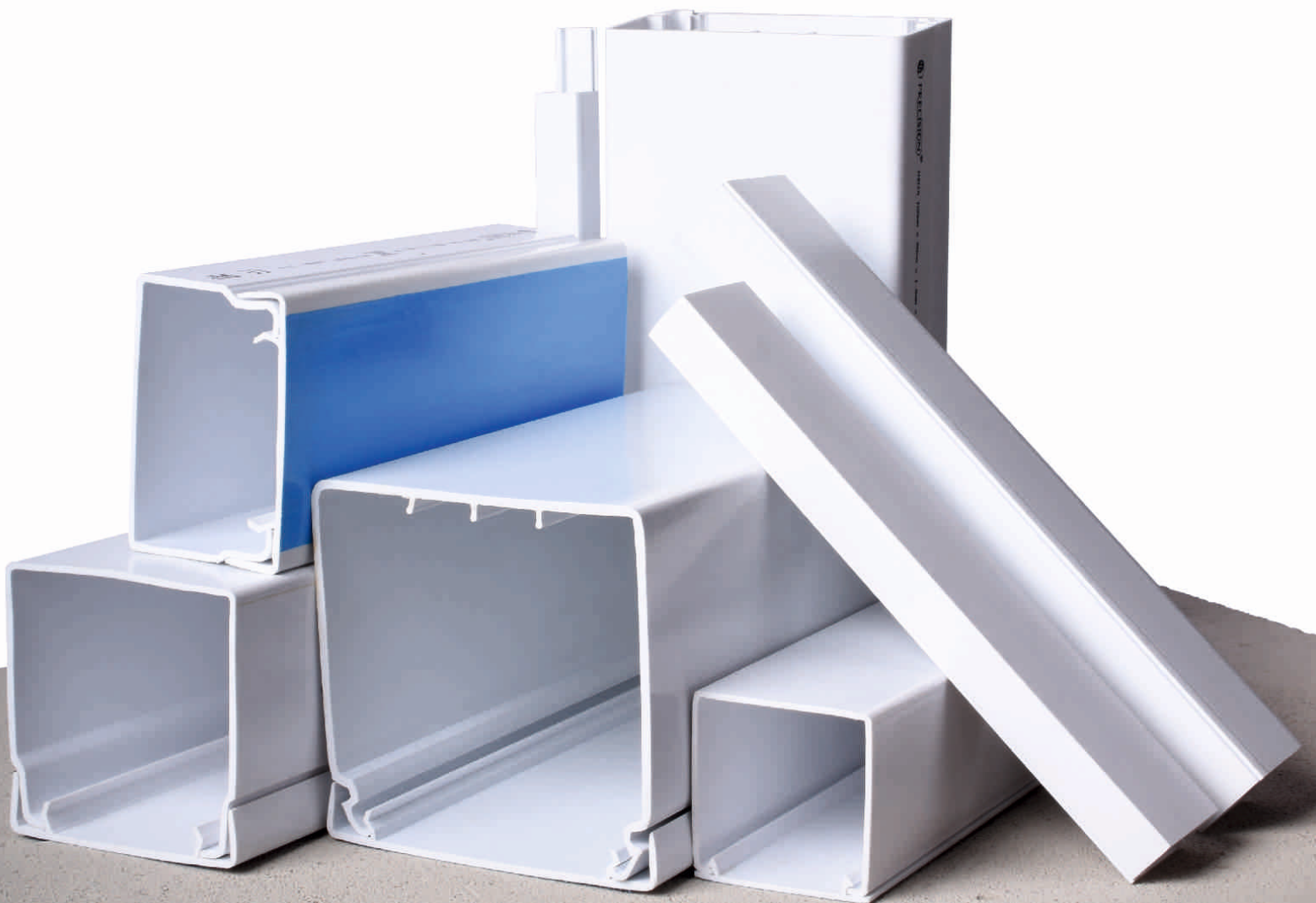
Application

To organize & protect cables on surface.

Features :

- Fast installation & easy maintenance
- Secure & elegant look
- Wide range of sizes to suit all cabling requirements
- Durable & impact resistant
- Fire retardant
- Corrosion free
- Thermal resistant from -5°C to +60°C.

Colour: Ivory & White. Other colours available on a made-to-order basis.



UPVC MINI / / MAXI TRUNKING

COLOUR : IVORY & WHITE

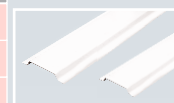
IS:14927
PART 2



Sr. No.	PRODUCT CODE	SIZE W x H	STD. PACK		RATE (mtr)
			pcs/mtr	mtr/Bundle	
UPVC MINI TRUNKING					
270	PT 2012	20x12	100 x 2m	200	25.00
271	PT 2512	25x12	100 x 2m	200	28.00
272	PT 3212	32x12	100 x 2m	200	34.50
273	PT 1616	16x16	100 x 2m	200	26.50
274	PT 2516	25x16	100 x 2m	200	41.00
275	PT 3816	38x16	50 x 2m	100	59.00
276	PT 3825	38x25	50 x 2m	100	82.00
277	PT 3838	38x38	25 x 2m	50	101.00
278	PT 5016	50x16	50 x 2m	100	83.00
279	PT 5050	50x50	15 x 2m	30	147.00
UPVC MINI TRUNKING (SELF ADHESIVE)					
280	PTS 1616	16x16	100 x 2m	200	34.00
281	PTS 2516	25x16	100 x 2m	200	53.00
282	PTS 3816	38x16	50 x 2m	100	78.00
283	PTS 3825	38x25	50 x 2m	100	100.00



Sr. No.	PRODUCT CODE	SIZE W x H	STD. PACK		RATE (mtr)
			pcs/mtr	mtr/Bundle	
UPVC MAXI TRUNKING					
284	PT 7550	75x50	9 x 2m	18	355.00
285	PT 7575	75x75	9 x 2m	18	458.00
286	PT 10050	100x50	10 x 2m	20	573.00
287	PT 100100	100x100	6 x 2m	12	830.00
288	PT 15050	150x50	5 x 2m	10	1120.00
UPVC MAXI TRUNKING DIVIDER					
289	PMTD10050	100x50	50 x 2m	100	80.00
290	PMTD100100	100x100	50 x 2m	100	80.00
RECTANGULAR CHANNEL					
291	PCH 13	13 x 9	50 x 2m	100	17.00
292	PCH 25	25 x 9	50 x 2m	100	22.00
293	PCH 38	38 x 9	50 x 2m	100	28.00



UPVC MINI/MAXI TRUNKING FITTINGS (MOULDED)

COLOUR : IVORY & WHITE

Sr. No.	PRODUCT CODE	SIZE W x H	STD. PACK Box	RATE (pc)
COUPLER				
294	PTC2012	20x12	100	5.00
295	PTC2512	25x12	100	6.00
296	PTC3212	32x12	100	6.00
297	PTC1616	16x16	100	6.00
298	PTC2516	25x16	100	7.00
299	PTC3816	38x16	50	11.00
300	PTC3825	38x25	50	11.00
301	PTC5050	50x50	10	47.00
302	PTC10050	100x50	10	66.00
ELBOW				
303	PTB2012	20x12	100	6.00
304	PTB2512	25x12	100	6.00
305	PTB3212	32x12	100	8.00
306	PTB1616	16x16	100	9.00
307	PTB2516	25x16	100	9.00
308	PTB 3816	38x16	100	11.00
309	PTB 3825	38x25	100	17.00
310	PTB 5050	50x50	10	68.00
311	PTB 10050	100x50	10	160.00



Sr. No.	PRODUCT CODE	SIZE W x H	STD. PACK Box	RATE (pc)
TEE				
312	PTT 2012	20x12	100	6.00
313	PTT 2512	25x12	50	9.00
314	PTT 3212	32x12	50	9.00
315	PTT 1616	16x16	100	7.00
316	PTT 2516	25x16	50	9.00
317	PTT 3816	38x16	50	13.00
318	PTT 3825	38x25	50	17.00
319	PTT 5050	50x50	10	84.00
320	PTT 10050	100x50	10	184.00
INTERNAL BEND				
321	PTI 2512	25x12	100	9.00
322	PTI 3212	32x12	100	9.00
323	PTI 1616	16x16	100	7.00
324	PTI 2516	25x16	100	9.00
325	PTI 3816	38x16	100	11.00
326	PTI 3825	38x25	50	17.00
327	PTI 5050	50x50	10	71.00
328	PTI 10050	100x50	10	108.00



UPVC MINI/MAXI TRUNKING FITTINGS (MOULDED)

COLOUR : IVORY & WHITE

Sr. No.	PRODUCT CODE	SIZE W x H	STD. PACK Box	RATE (pc)		Sr. No.	PRODUCT CODE	SIZE W x H	STD. PACK Box	RATE (pc)		
EXTERNAL BEND						SOCKET MOUNTING FRAME						
329	PTE 2512	25x12	100	9.00		340	PMTS1	1GANG	30	95.00		
330	PTE 3212	32x12	100	9.00		341	PMTS2	2GANG	20	113.00		
331	PTE 1616	16x16	100	7.00								
332	PTE 2516	25x16	100	9.00								
333	PTE 3816	38x16	100	11.00								
334	PTE 3825	38x25	50	17.00								
335	PTE 5050	50x50	10	71.00								
336	PTE 10050	100x50	10	108.00								
4 WAY							JUNCTION LINKER					
337	PTW 3212	32x12	50	10.00	342		PTJL7575 P	standard	25	500	13.50	
END CAP						SURFACE SWITCH BOX (Trunking Knockout)						
338	PMTC 50	50x50	50	81.00		343	PTSB1	3'x3'	10	300		38.00
339	PMTC 100	100x50	50	90.00		344	PTSB2	6'x3'	10	200		64.00

UPVC MINI/MAXI TRUNKING FITTINGS (FABRICATED)

COLOUR : IVORY & WHITE

Sr. No.	PRODUCT CODE	SIZE W x H	STD. PACK Box	RATE (pc)		Sr. No.	PRODUCT CODE	SIZE W x H	STD. PACK Box	RATE (pc)	
ELBOW						EXTERNAL ANGLE 135°					
345	PMTL 751	75x50	1	348.00		367	PTEA 50	50x50	1	225.00	
346	PMTL 752	75x75	1	415.00		368	PTEA 751	75x50	1	348.00	
347	PMTL 1002	100x100	1	810.00		369	PTEA 752	75x75	1	415.00	
TEE						370	PTEA 1001	100x50	1	509.00	
348	PMTT 751	75x50	1	348.00		371	PTEA 1002	100x100	1	774.00	
349	PMTT 752	75x75	1	415.00		INTERNAL TEE 90°					
350	PMTT 1002	100x100	1	774.00	372	PTIT 50	50x50	1	225.00		
INTERNAL ANGLE						373	PTIT 751	75x50	1		348.00
351	PMTI 751	75x50	1	348.00		374	PTIT 752	75x75	1		415.00
352	PMTI 752	75x75	1	415.00		375	PTIT 1001	100x50	1		509.00
353	PMTI 1002	100x100	1	774.00		376	PTIT 1002	100x100	1		774.00
EXTERNAL ANGLE						EXTERNAL TEE 90°					
354	PMTE 751	75x50	1	348.00		377	PTET 50	50x50	1	225.00	
355	PMTE 752	75x75	1	415.00		378	PTET 751	75x50	1	348.00	
356	PMTE 1002	100x100	1	774.00		379	PTET 752	75x75	1	415.00	
FLAT ANGLE 135°						380	PTET 1001	100x50	1	509.00	
357	PTFA 50	50x50	1	225.00		381	PTET 1002	100x100	1	774.00	
358	PTFA 751	75x50	1	348.00							
359	PTFA 752	75x75	1	415.00							
360	PTFA 1001	100x50	1	509.00							
361	PTFA 1002	100x100	1	774.00							
INTERNAL ANGLE 135°											
362	PTIA 50	50x50	1	225.00							
363	PTIA 751	75x50	1	348.00							
364	PTIA 752	75x75	1	415.00							
365	PTIA 1001	100x50	1	509.00							
366	PTIA 1002	100x100	1	774.00							

Precision Panel Trunking are manufactured from High Impact unplasticised polyvinyl chloride (UPVC) to ensure panel & machinery safety in extreme conditions. These trunkings are ideal to channelise medium and big size panels & various applications where economy, space saving, safety and durability are paramount.

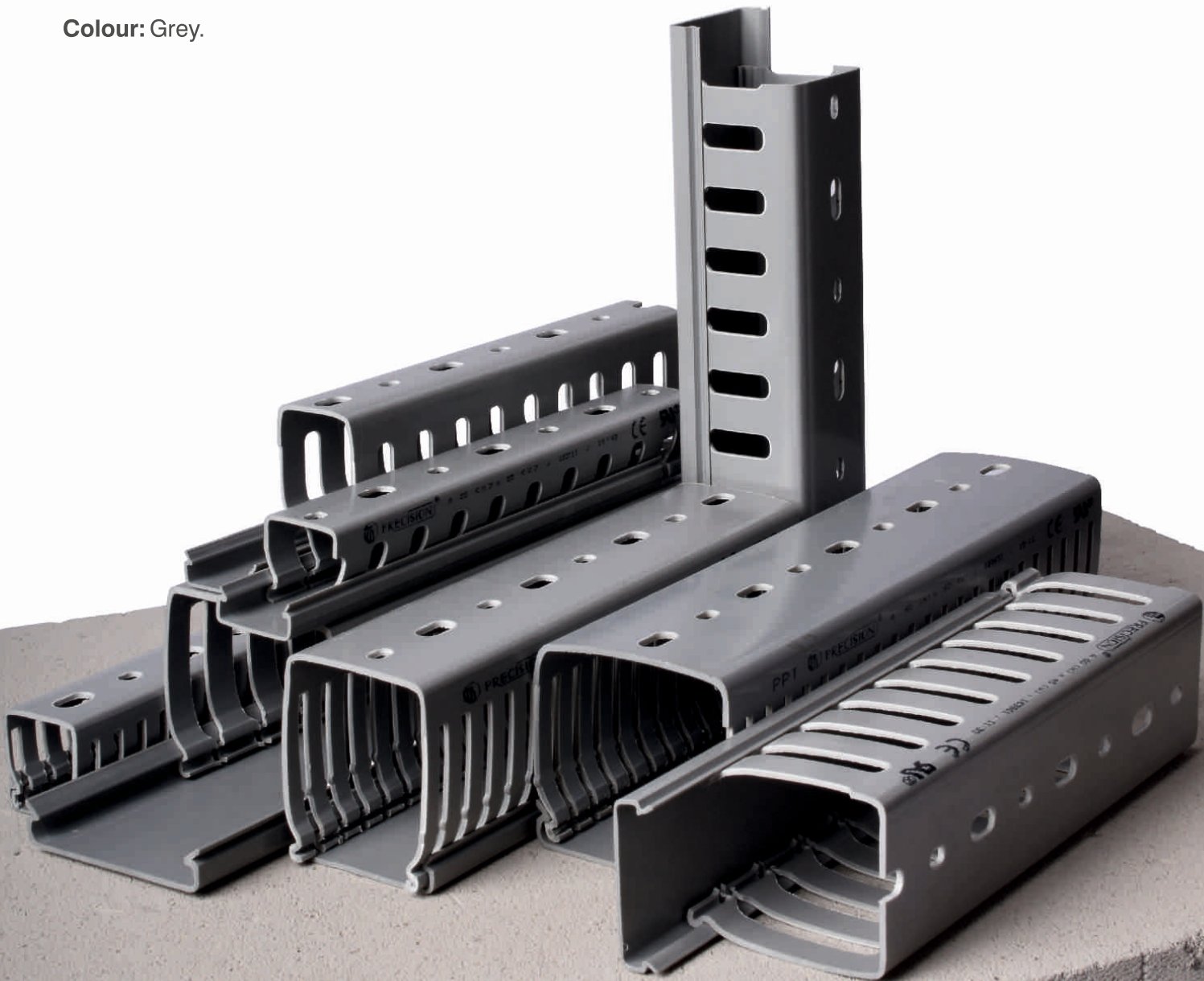
Applications

To conduct, organize, and protect cables inside Electrical & Telecommunication panels, Industrial machinery wiring, Computer LAN wiring & Data centers.

Features

- Non-brittle, flame retardant, wrap proof
- Vertical slids & detachable strips facilitates systematic wiring, permits faster connections, additions & fault tracing of wires
- Avoids bunching, taping & provides complete electrical insulation
- Unique cover locking design prevents popping of wires while removing cover
- Elongated slots at bottom allows flexible mounting
- High tensile strength 390 Kg/cm²
- Thermal resistant from -5°C to +60°C.

Colour: Grey.



UPVC PANEL TRUNKING (CABLE DUCT)

COLOUR : GREY



Sr. No.	PRODUCT CODE	SIZE H x W	STD. PACK pc/mtr	mtr/Bundle	RATE (mtr)
UPVC PANEL TRUNKING - STANDARD SLOT					
382	PPT 1515	15x15	200x1m	200	39.00
383	PPT 2525	25x25	130x1m	130	59.00
384	PPT 3025	30x25	125x1m	125	63.00
385	PPT 4525	45x25	90x1m	90	76.00
386	PPT 4545	45x45	50x1m	50	109.00
387	PPT 4560	45x60	50x1m	50	134.00
388	PPT 6025	60x25	70x1m	70	101.00
389	PPT 6040	60x40	60x1m	60	114.00
390	PPT 6045	60x45	50x1m	50	119.00
391	PPT 6060	60x60	40x1m	40	147.00
392	PPT 7525	75x25	60x1m	60	128.00
393	PPT 7575	75x75	30x1m	30	232.00
394	PPT 10075	100x75	24x1m	24	380.00
395	PPT 100100	100x100	16x1m	16	446.00



Sr. No.	PRODUCT CODE	SIZE H x W	STD. PACK pc/mtr	mtr/Bundle	RATE (mtr)
UPVC PANEL TRUNKING - THIN SLOT					
396	PPT 3025TS	30x25	125x1m	125	66.00
397	PPT 4525TS	45x25	90x1m	90	80.00
398	PPT 4545TS	45x45	50x1m	50	115.00
399	PPT 6025TS	60x25	70x1m	70	106.00
400	PPT 6040TS	60x40	60x1m	60	119.00
401	PPT 6045TS	60x45	50x1m	50	124.00
402	PPT 6060TS	60x60	40x1m	40	155.00
UPVC PANEL TRUNKING TOP COVER					
403	PPT 25T	25mm	100x1m	100	37.00
404	PPT 45T	45mm	50x1m	50	42.00
405	PPT 60T	60mm	50x1m	50	67.00
406	PPT 75T	75mm	25x1m	25	95.00
407	PPT 100T	100mm	25x1m	25	106.00



* AVAILABLE WITH NORMAL & THIN SLOTS IN 1 MTR & 2 MTR LENGTH.

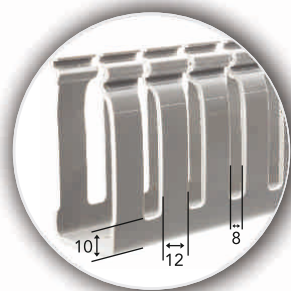
* PANEL TRUNKING ALSO AVAILABLE WITHOUT SLOTS.



OPTIMAL GRIP LID

- Precision's Panel Trunking lid design provides high capacity to sustain leads of wire in the case of a cable positioned in the centre of the duct and avoids them from riding up.
- Quick snap on / off and non-slip assembly forms a firm rigid channel.

- Interlocking lid and channel is optimised to make the system easier to install and provided discrete routing of cables.
- Uniform grip and thickness throughout the length system with independent non-slip lid, keeps cover in place during high vibration applications.



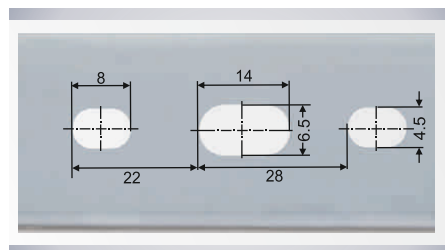
WALL PERFORATION RIB DESIGN

- All wall perforation ribs of Precision Panel Trunking have larger rounded slots for easy insertion of wire and cables.
- Rounded design with burr-free edges to prevent any injury to the hand of the user or to the cable insulation.

ELONGATED MOUNTING SLOTS

- Perforated base with elongated slot allows flexible mounting and better fastening of the cables.
- Robust sections.

• ALL DIMENSIONS IN (mm)



Plumbing Piping Systems

CPVC Pipes & Fittings

ASTM (UPVC) Pipes & Fittings

SWR Pipes & Fittings

Agriculture PVC Pipes & Fittings



TERMS & CONDITIONS

- All mentioned prices are inclusive of excise duty and cess. Prices are exclusive of local VAT/CST, octroi & other government taxes if any
- The above prices are ex-factory
- Any revision in existing excise duty, VAT or any new government taxes will be to buyers account only
- Prices are subjected to change without prior notice
- Subject to Mumbai Jurisdiction

ISO 9001:2008 | ISO 14001:2004 | OHSAS 18001:2007



Precision Plastic Industries Pvt. Ltd.

19 / D, Nand Jyot Industrial Estate,
Safed Pool, Andheri-Kurla Road,
Andheri (East), Mumbai 400072, India
T +91 22 4041 2000

